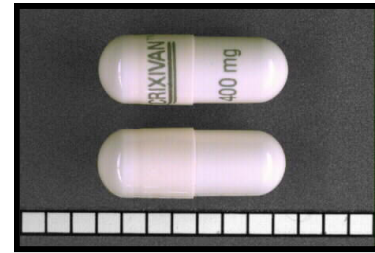


INDINAVIR (CRIXIVAN)

USE:

Indinavir is an antiretroviral drug in a class called protease inhibitors. It is used in combination with other antiretroviral drugs in the treatment of HIV (Human Immunodeficiency Virus) infections. This drug is not a cure for HIV.

AVAILABLE AS: 100, 200, 333, and 400 milligram (mg) capsules



HOW TO USE THIS MEDICATION:

Take this medication exactly as directed by your doctor. Do not stop taking this medication on your own without first consulting a physician. The normal dose for indinavir is 800mg (two 400mg capsules) every 8 hours. Dosing for children will be determined by your doctor. This dose may be adjusted if you are taking other medication that interacts with indinavir. Take this medication on an empty stomach or with a light, low fat snack. **It is very important to drink plenty of water while taking this medication.** It could also be taken with skim or non-fat milk, juice, coffee, or tea. Drink at least six 8-ounce glasses of fluid daily. This medication can cause kidney stones. Drinking plenty of water will help to prevent kidney stones.

Your doctor may want you to have occasional blood tests. Make sure you keep all of your appointments.

Indinavir should be stored in a cool, dry place away from excessive heat, cold, light or moisture. Keep indinavir in its original container and do not remove the desiccant in order to keep the capsules dry. Always keep medication out of the reach of children.

It is very important to take every dose of your medication in order for it to work correctly. If you miss a dose of indinavir, take it as soon as you remember if it is within two hours of the missed dose. If it has been longer than two hours, skip that dose and take your next dose at the normal time. If you think you may have taken too much of your medication, contact your local poison control center or emergency room right away.

CONTRAINDICATIONS:

Do not take indinavir if you have had a prior allergic reaction to indinavir (Crixivan) or any component of the medication. You should not take indinavir if you are also taking astemizole (Hismanal), terfenadine (Seldane), cisapride (Propulsid), triazolam (Halcion), midazolam (Versed), or ergot medications (Cafergot, Wigraine, dihydroergotamine).

SIDE EFFECTS:

Side effects that will most likely go away include nausea, vomiting, diarrhea, rash, heartburn, trouble sleeping, and headache. Other minor side effects include joint or muscle aches, metallic taste in the mouth, blurred vision, and dry skin. Changes in body fat may occur with this class of drug. Tell your doctor if you experience loss of fat in the

arms, legs and face or increased fat in the upper back and neck, breast, and abdomen. Ask your doctor how to manage these side effects with diet, exercise, or medication.

This medication may change the values of some lab tests. Indinavir may cause changes in bilirubin, blood sugars, red blood cells, lipids, or liver enzymes. Make sure you keep all of your appointments to have blood work done.

Warning: Contact your doctor immediately if you experience any of the conditions listed below. Stop taking indinavir immediately and seek medical attention if you experience an allergic reaction (difficulty breathing; closing of your throat; swelling of your lips, tongue, or face; or hives). Kidney stones are a common side effect of this medication. This can lead to more severe kidney problems if not taken care of. This is why it is important to drink plenty of water while taking indinavir. Call your doctor right away if you develop any of the following side effects: bleeding gums, nosebleeds, unusual bleeding or bruising, bloody or dark urine, increased hunger or thirst, sharp pain in the side or middle back, severe muscle pain and weakness, or yellowing of the eyes or skin. Medications in this class of drugs have been shown to cause diabetes or worsen pre-existing diabetes. This class of drug may also cause people who have hemophilia (bleeding disorder) to have increased bleeding. Your doctor will probably want you to have occasional blood tests. Make sure you keep all of these appointments. Tell your doctor if you have liver or kidney problems, diabetes, high cholesterol, or hemophilia before starting indinavir.

Notify your doctor if you are pregnant, planning to become pregnant or breastfeeding. The effects of indinavir on an unborn baby are unclear. People with HIV should never breastfeed because of the risk of transmitting HIV to the infant.

This medication does not prevent the transmission of HIV to other people. Make sure you understand and practice safe sex and do not share needles with anyone.

DRUG INTERACTIONS:

Alert: Find out about medicines that should not be taken with indinavir. Do not take indinavir with the medications listed under “contraindications.” Talk to your doctor before taking rifampin (Rifadin, Rifamate, Rifater, Rimactane), lovastatin (Mevacor), simvastatin (Zocor), atorvastatin (Lipitor), sildenafil (Viagra), rifabutin (Mycobutin), ketoconazole (Nizoral), itraconazole (Sporanox), phenobarbital, phenytoin (Dilantin), carbamazepine (Tegretol), dexamethasone (Decadron), didanosine (Videx), delavirdine (Rescriptor), efavirenz (Sustiva), the herbal supplement St. John’s wort, or calcium channel blockers such as amlodipine (Norvasc) or felodipine (Plendil).

This is not a complete list of interactions. Make sure your doctor knows all of the medication you are taking. Also, ask your doctor or pharmacist about any medications including over the counter, herbal, vitamin, and prescription products before using them with indinavir.

References: see references 25-28